

G-31 c

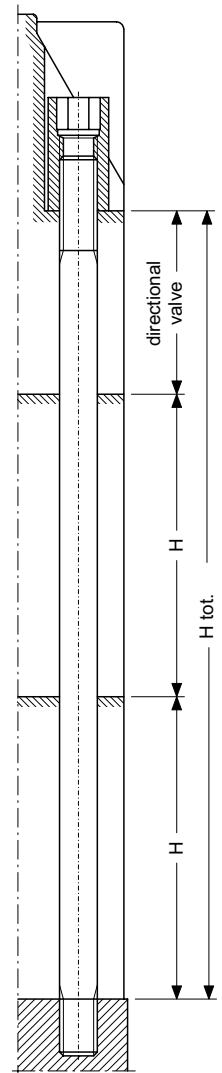
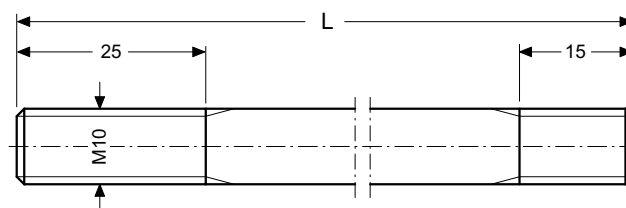
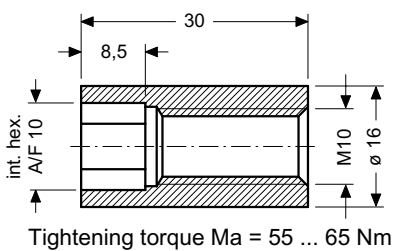
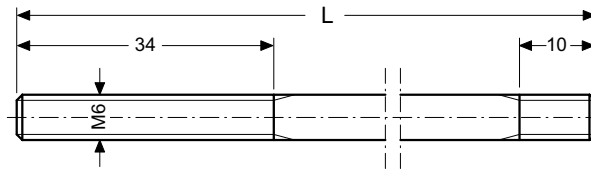
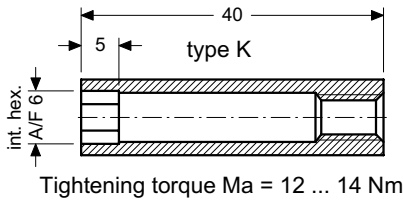
Fixing Kits

for size 7 Modular Stacks

with directional valves

- Steel stud, δb min. 1000 N/mm², phosphated
- Recessed nut, steel, phosphated

DIMENSIONS



Thread	Stud M6				Stud M10	
	L	H tot.	Part no.:			
	146	101 .. 127	K6146	161	116 .. 142	K6161
				220	175 .. 201	K6220
				245	200 .. 226	K6245
				223	182 .. 196	10223
				238	197 .. 211	10238

Overview of cap screws / studs required

1 directional valve plus:	Stud M6				Cap screw M10 DIN 912, min.8.8		Stud M10		
	H total 101 .. 127	H total 116 .. 142	H total 175 .. 201	H total 200 .. 226	H total 113 .. 119	H total 123 .. 129	H total 182 .. 196	H total 197 .. 211	
No. of modules with height H = 80 mm	1	K6146	K6161	---	---	M10x130	M10x140	---	---
	2	---	---	K6220	K6245	---	---	10223	10238

MODEL CODE KEY

Ex. 1 Stud kit no. K 6 161 / 10 223

4 studs M10 and 2 studs M6 complete with nuts

K = Recessed nut M6, type K
(Blank) = Recessed nut M10

6 = Thread M 6

10 = Thread M10

Stud length L (mm)

info.ch@bucherhydraulics.com

www.bucherhydraulics.com

© 2015 by Bucher Hydraulics AG Frutigen, CH-3714 Frutigen

All rights reserved.

Data is provided for the purpose of product description only, and must not be construed as warranted characteristics in the legal sense. The information does not relieve users from the duty of conducting their own evaluations and tests. Because the products are subject to continual improvement, we reserve the right to amend the product specifications contained in this catalogue.